

# Assignment

magazine

May 2010  
issue 5

SHOW US YOUR HANDS!

---

# Assignment

magazine

May 2010  
issue 5

Assignment Magazine collects the work generated by a group of contributors assigned a challenge every month. The only rule for completion of the assignment is that the final product fit on a single standard-sized sheet of paper. Contributors take turns generating the assignments. Each work is © by individual contributor.

Contributors:

**Kyle Bethea  
Karisa Bruin  
Jorin Garguilo**

**Molly Hall  
Brett Lyons**

**compiled by Jorin Garguilo  
contact us at [am@buoyfish.com](mailto:am@buoyfish.com)**

This month's assignment, assigned by Molly Hall:

## SHOW US YOUR HANDS!



"XBox Live X-Ray Cam Shows us the  
Players' Hands," Mike Sexton, Announcer

Karisa Bruin



Distal Phalanges  
of Spades



Proximal Phalange  
of Hearts



Distal Phalanges  
of Hearts



Trapezium of  
Spades



Trapezoid of  
Clubs



Metacarpal of Diamond



Capitate of Diamonds



Scaphoid of Clubs

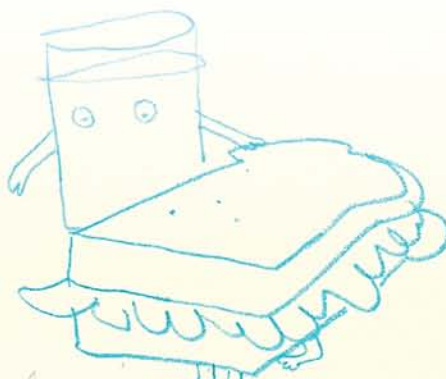
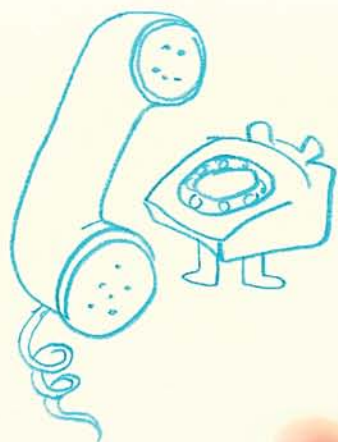
Mike Sexton: "Her Odds: 62% before the Flop."

"She's looking for a lunate or a  
hamate, and suit."

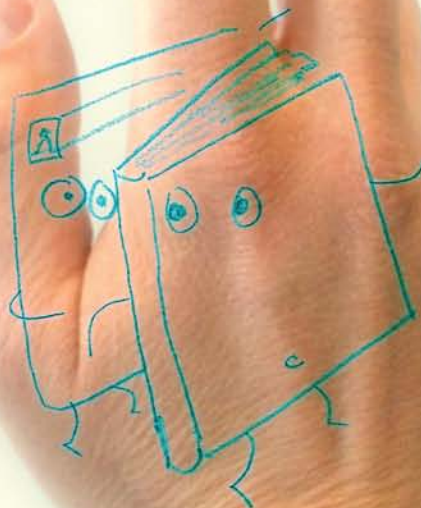
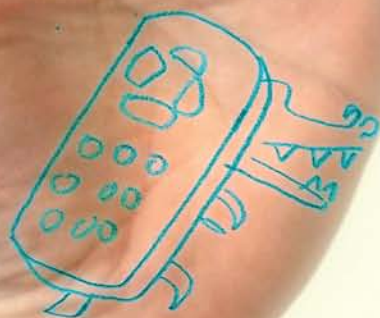
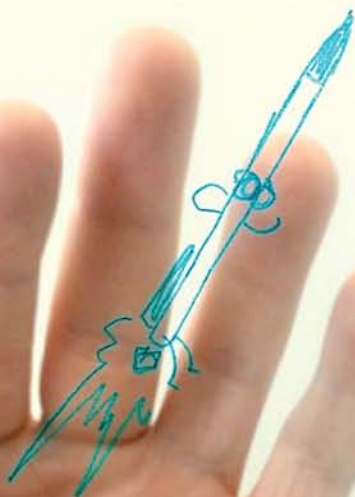
"She checks." "There's the burn card."

"The Flop shows a hamate of hearts"

rough servants of the head



my brain is the magic  
you are the wand



HELLO

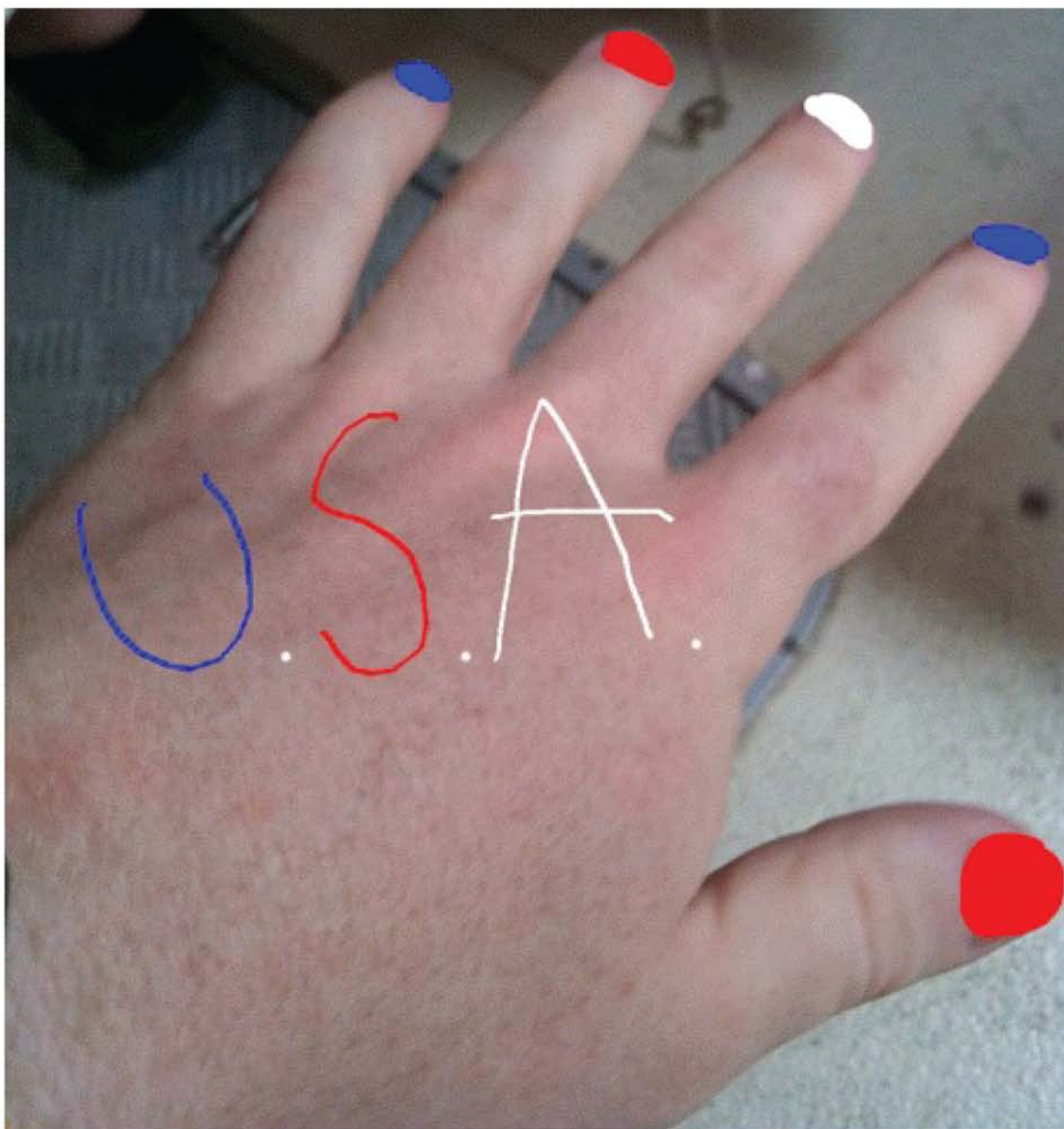






**YOU ARE  
SURROUNDED**

**YOU ARE UNDER MY ARREST**







Molly Hall

Assignment Magazine . May 2010 issue 5 . Show Us Your Hands!  
am@buoyfish.com

all work © by individual contributor